



FIG. 4

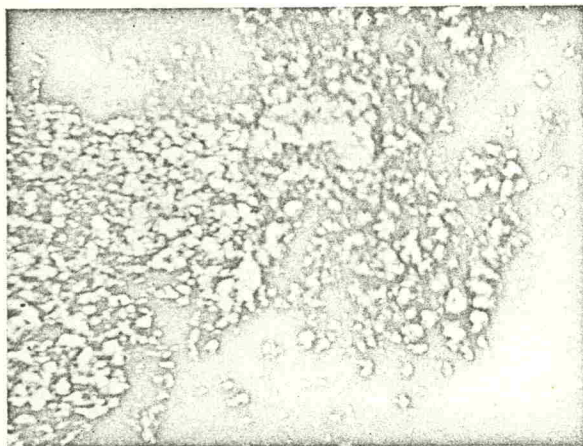


FIG. 5

FIGS. 3-5. Progress of the transformation on the *surface* of the crystal.

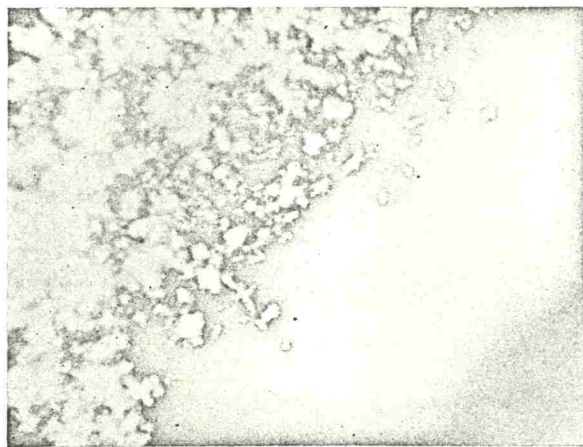


FIG. 6 Loss of transparency due to scattering from the transformed material in the *interior* of the crystal. Exposure time for Fig. 6 is considerably larger than for Figs. 3-5.

OPTICAL C

This phe-
formation p
the sample
simple exp
free surfac
than the ir
consider as
that the sur
different cr
that they w
applied pr
example, a
0.1% less
volume ch
1100 b app
some press
pressure in
layers of th
that of the
of the surf
would det
observed $1/$
experiment
proposal.

The opt
lapse phot
mitted an
the transf
became tra
the high p
pressure w
the transfo
so that th
lished to
high trans
Values of
transforma
transforma
sure value
quite narro
transforma
The range
previously
3900 b.⁽¹⁴⁾

We feel
formations
during the
and intere